



FAS
ANY PLACE. ANY BUSINESS.



900 | 1050

ADVANCED

FAS ADVANCED

Snack machines

- Large capacity spiral vending
- Configuration possibilities 1 T - 2T - 3 T (Snack + Drink + Food)
- Available in models 900 and 1050
900: from 4 to 8 selections, 6/7 drawers
1050: from 5 to 10 selections, 6/7 drawers
- Easy Click System: for configuring the machine quickly and easily without any need for technical instruments
- Patented, energy-saving, slide-in/slide-out refrigeration unit that can be replaced quickly. Also available in the CO2 version to reduce the greenhouse gas effect to a minimum, with GWP = 1
- Patented lateral refrigeration ventilation for energy savings, condensation and optimal homogenization of temperatures
- 32-bit electronics with USB 2.0 HOST
- Power Led illumination with Energy Saving
- Programming, cloning, and Audit functions using a standard USB pen drive
- Ready for easy installation of optional Drawer Display Kit and Push Drawers
- Riella RS1 Lock
- Interactive user interface with 7" TABLET;
- Integrated WIFI connection;
- Configured for dongle key internet connection;
- Integrated remote management via Fas Cloud+.



Fas 900 Advanced + Fas 1050 Advanced



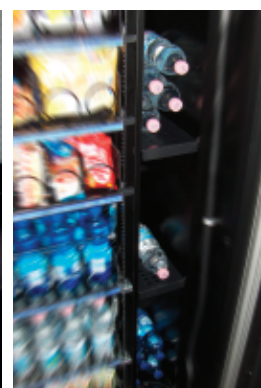
R744



R744
(Advanced 1T)



Easy click System



Pre cooling

Characteristics		Fas Advanced 900	Fas Advanced 1050
Height	mm	1830	1830
Width	mm	900	1050
Depth	mm	790	790
Dimensions with door open	mm	1660	1810
Weight	Kg	260	330
Surfaces and door parts		metal	metal
Antitheft profile		no	no
Power	V / Hz	230/50	230/50
Internal temperature - min	C°	+3°C with fridge safety on 3 bottom drawers	+3°C with fridge safety on 3 bottom drawers
Protocol		MDB/Executive/BDV	MDB/Executive/BDV
Standard colour		Profile: anodised extruded aluminium Surfaces: black - Ral 9005	Profile: anodised extruded aluminium Surfaces: black - Ral 9005



Fas International Srl
Via Lago di Vico, 60
36015 Schio · Vicenza · Italy
T +39 0445 502011

F +39 0445 502.010
info@fas.it
www.fas.it

